

COMMERCIAL TENANT IMPROVEMENT



SCE LIGHTING LAB, IRWINDALE, CA

Scope: Tenant improvements for Southern California Edison to develop a laboratory for evaluating lighting technologies.

Project role: Architecture

Size: 3000 SF

Year completed: 2004



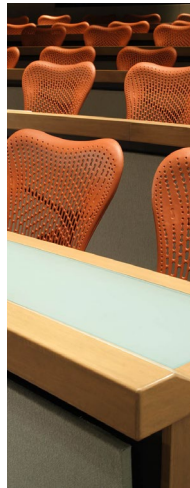
SCE CTAC FOODSERVICE TECHNOLOGY CENTER, IRWINDALE, CA

Scope: A laboratory designed to educate the food service industry about energy efficiency opportunities within their industry.

Project role: Architecture

Size: 3000 SF

Year completed: 2010



SCE CTAC (CUSTOMER TECHNOLOGY APPLICATION CENTER) CONFERENCE CENTER, IRWINDALE, CA

Scope: PECK performed a series of tenant improvement projects for Southern California Edison's CTAC facility including their conference center which is used to deliver lectures and create displays for public education involving electrical engineering related technologies. Tenant improvements also included the Smart Energy Experience Display, the multimedia presentation room, the catering kitchen and several offices.

Project role: Architecture, Structural

Size: approx 6,000 SF

Year completed: 2005



SCE CTAC ELECTRIC VEHICLE CHARGERS AND SOLAR CANOPY, IRWINDALE, CA

Scope: Tenant improvements involved new solar canopies on the south side of the CTAC building as a display for vehicle charging stations within parking lots.

Project role: Architecture, Structural

Size: 2800 SF

Year completed: 2010



SCE CTAC SMART ENERGY EXPERIENCE DISPLAY, IRWINDALE, CA

Scope: A display showcasing Edison's Smart Metering and Grid Resilience Program. The Experience lets users experience the future of energy efficiency including how smart grid technologies are providing smarter, cleaner and more reliable power to Edison's customers. Tenant improvements also included a multimedia presentation room.

Project role: Architecture, Structural

Size: 2,341 SF

Year completed: 2010

[Go to project page](#)



SCE GO3 (GENERAL OFFICE #3), ROSEMEAD EXECUTIVE OFFICES COMPLEX, ROSEMEAD, CA

Scope: Tenant improvement project on the second and third floors of a three-story precast concrete building including all new air and electrical distribution equipment, 100% reconfiguration of the offices and conference rooms and restroom remodels. We achieved LEED Gold status on this project which involved special design features, project tracking and the commissioning of various elements such as air conditioning efficiency, indoor air quality, energy efficiency, and recycling programs.

Project role: Architecture

Size: 143,000 SF

Year completed: 2007

COMMERCIAL TENANT IMPROVEMENT



ING DIRECT OFFICES, W. LOS ANGELES, CA

Scope: The ING Direct Offices is an interior design project involving the creation of ING's trading floor, mortgage divisions, call center, boardroom and administrative offices. PECK STRUCTURAL designed equipment, building signage, and generator supports on multiple floors and the roof.

Project role: Architecture, Structural

Size: 60,000 SF

Year completed: 2006

[Go to project page](#)



ING DIRECT CAFE, WEST LOS ANGELES, CA

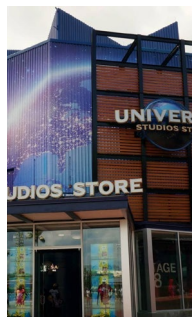
Scope: The ING Direct Café is an interior project and collaboration between Gensler, NY, and PECK. Located on the ground floor space of the ING Direct Offices in West Los Angeles, ING Direct created their third café in the US intended to promote their internet based banking products on the west coast.

Project role: Architecture

Size: 3,145 SF

Year completed: 2003

[Go to project page](#)



UNIVERSAL STUDIOS STORE, CITYWALK, UNIVERSAL CITY, CA

Scope: Tenant improvement project involving renovations and reconfiguration of the Universal Studio Store's interior space. PECK performed structural engineering steel work for (M) Arch's design around their central rotunda.

Project role: Structural

Size: 5,000 SF

Year completed: 2007



TADASHI SHOJI, SOUTH COAST PLAZA, COSTA MESA, CA

Scope: Tenant improvement project for a retail store installation in the South Coast Plaza Mall for clothing designer, Tadashi Shoji. The changing room structure consisted of several dozen vertical panes of glass that operated by opening and closing like louvers. PECK provided engineering for the design by (M) Arch including ceiling systems and changes to the glazing and storefront systems and how those changes interfaced with the base building of the mall.

Project role: Structural

Size: 1,500 SF

Year completed: 2015



TADASHI SHOJI WAREHOUSE, VERNON, CA

Scope: PECK provided engineering for the design by (M) Arch including the repair of the original wood bow trusses in the warehouse headquarters and manufacturing building. PECK also redesigned the supports for HVAC equipment on the roof and made modifications to the existing masonry storefront.

Project role: Structural

Size: 25,000 SF

Year completed: 2002



FRED SEGAL, SANTA MONICA & MELROSE AVE (W. HOLLYWOOD) LOCATIONS, CA

Scope: Tenant improvement in the Santa Monica location involving reconfiguring several interior bearing walls and providing seismic resistance where the building had been modified. PECK performed the structural work for the design by (M) Arch of an added salon on the south side of the store. PECK also completed an unexecuted structural design for their flagship store on Melrose. The design entailed an expansion into an adjacent building, so PECK made designs for a rehab and remodeling of the adjacent two-story wood structure to the west of the store on Melrose.

Project role: Structural

Size: 20,000 SF (Santa Monica location), 6,000 SF (Melrose location)

Year completed: Santa Monica in 2002

PECK ARCHITECTURE | PECK STRUCTURAL | PECK CIVIL

COMMERCIAL TENANT IMPROVEMENT

SAN BERNADINO REGIONAL OFFICE, SAN BERNADINO, CA

Scope: Prime architect for the rehabilitation of a building constructed in the 1950s including all new mechanical, electrical and plumbing systems.

Project role: Architecture

Size: 72,043 SF

Projected completion: 2018

NARDULLI DIGITAL STUDIOS, HOLLYWOOD, CA

Scope: Extensive remodel of an existing two-story wood frame and steel office building on La Brea in Hollywood, CA to accommodate new digital media processing rooms and computer labs. The first phase of work was finished in 1999 (the studios opened in 2000) and PECK subsequently worked on structural for their signage in 2001 and updated plans in 2009. PECK did the structural for the building's remodel when it changed hands and became the Aids HealthCare Association Project in 2013.

Project role: Structural

Size: 12,000 SF

Year completed: 2009 - 2013

CHARTER COMMUNICATIONS AGGREGATE,
MULTIPLE LOCATIONS IN CA

Scope: Provided structural engineering support for Charter Communication Data Centers in Norwalk, Big Bear, Glendale and Turlock.

Project role: Structural

Year completed: 2001

SCE MENIFEE SERVICE CENTER EXPANSION - BUILDING A,
MENIFEE, CA

Scope: Tenant improvements involving new conference rooms, new restrooms, reconfiguration of office space, storage additional and associated IT, electrical, lighting and finishes.

Project role: Architecture

Size: 24,500 SF

Year completed: 2009

[Go to project page](#)